

UBX-310

Intelligent Compact Fanless BOX PC



DeviceOn/iService

Features

- Equipped with DeviceOn/iService software remote device management
- Embedded in Intel Skylake Core i3/i5 processor
- Compact design with 45mm in height
- Easy/quick installation for additional peripherals and expanded modular
- Support 1 x 2.5" SATA HDD Bay and 1 mSATA
- Multiple IO ports is suitable for variety of applications.
- Lockable DC jack design
- Support wall/VESA mount
- Supports WISE-PaaS/RMM and Embedded Software APIs

WISE-PaaS/RMM     

Introduction

UBX-310, an intelligent, fanless embedded system powered by Intel® Skylake Core i3/i5 low power processor with multiple I/O interface. Fanless design can provide the user quiet operation environment and reduce the failure rate. These low-power platforms provide energy-efficient and environmentally responsible solutions, compact and fanless design and serve applications targeted at factory automation, machine automation, retail, kiosks, and self-service applications.

Moreover, UBX-310 is equipped with Advantech's DeviceOn/iService software, which is a next-generation unified device management solution based on the WISE-DeviceOn platform. With support for batch operations and multi-device control, DeviceOn/iService enables easy device configuration and deployment for convenient remote device management

Specifications

| | | UBX-310F-I3B00 | UBX-310F-I5B00 |
|---------------|----------------------------|--|----------------|
| Processor | CPU | Core i3-6100U | Core i5-6300U |
| | Max Speed | 2.3GHz | 2.4GHz |
| Memory | Technology | Single channel DDR4 2133 MHz SDRAM | |
| | Max Capacity | Up to 16GB | |
| | Socket | 1 x 260-pin S0-DIMM | |
| Graphic | Capacity | Integrated Intel® HD Graphics Engine | |
| | HDMI | Max. resolution 3840 x 2160 @30Hz | |
| | VGA | Up to SXGA 2048 x 1152 @ 60 Hz | |
| Ethernet | Interface | 10/100/1000 Mbps | |
| | Controller | I219LM/I211AT GbE LAN | |
| Audio | Interface | Realtek ALC892 | |
| Front IO | USB2.0 | 1 | |
| | USB3.0 | NA | |
| | Serial | NA | |
| Rear IO | VGA | 1 | |
| | HDMI | 1 | |
| | RJ-45 | 2 | |
| | USB | 4 x USB3.0, 2 x USB2.0 | |
| | Serial | 4, COM1&COM2 support 5V/12V Power, COM2 support RS232/422/485 by order | |
| | LPT | NA | |
| | RJ11 | 1, cash drawer default 12V | |
| | Audio | 1 x Line-out, 1 x Mic-in | |
| | DC Jack | 1 | |
| | Expansion | Mini PCIe | |
| Storage | SATA3.0 | 1 x 2.5-inch SATA3.0 HDD/SSD (7mm height) | |
| | mSATA | 2 | |
| Power | Requirement | ATX Mode, AC to DC, DC 12V/5A, 60W | |
| Miscellaneous | Dimension (L x W x H) | 245 x 185 x 45 mm | |
| | Weight | 2.0kg | |
| Mounting Mode | Accessories | Wall /VESA mount | |
| Software | OS | Win7, Win10, POSReady7, Linux | |
| Environment | Operating Temperature | 0 ~ 40 °C | |
| | Storage Temperature | -40 ~ 85 °C (-40 ~ 185 °F) | |
| | Relative Humidity | 90% @ 40 °C (non-condensing) | |
| | Vibration during operation | With HDD:0.5Grms, IEC 60068-2-64, random 5-500HZ, 3 axes, 1hr/axis | |
| Certification | Shock during operation | With HDD:10 G, IEC 60068-2-27, half sine, 11 ms duration | |
| | | CCC/BSMI/CE/FCC/UL/CB | |

Notes : UBX-310 doesn't support WIFI and BT function in Europe Area.

Specifications (Cont.)

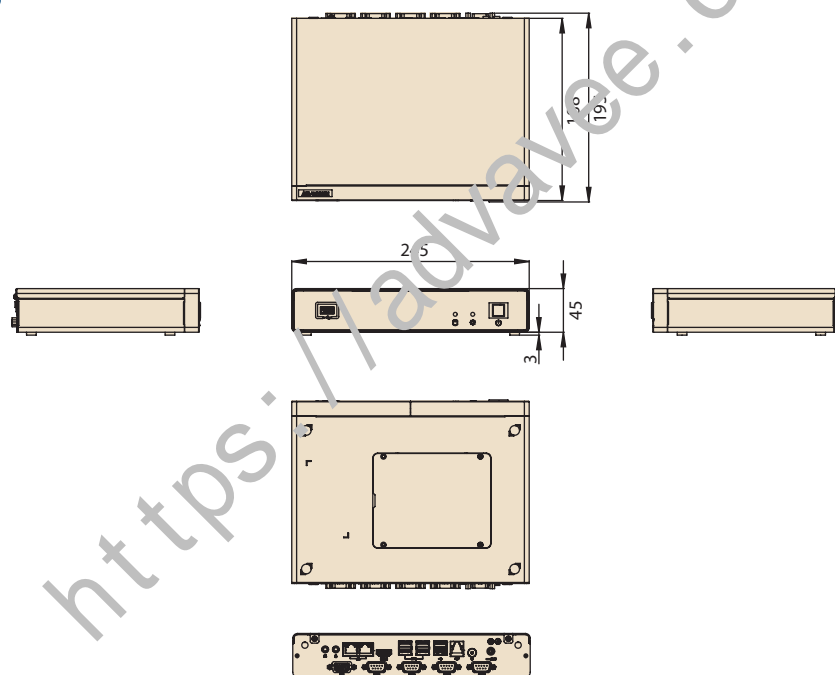
| | | |
|---|---|------------|
| DeviceOn/iService Remote Device Management | Operating System | Windows 10 |
| | Common Controls (Reboot, Shutdown) | ✓ |
| | Remote desktop | ✓ (VNC) |
| | Device-Specific Controls (Audio controls) | ✓ |
| | Connection Status | ✓ |
| | Hardware Status | ✓ |
| | Hard Disk Status | ✓ |
| | Batch Operation Support | ✓ |
| | OTA Storage Management | FTP |
| | OTA Software Updates | ✓ |
| | Software Watchlist | ✓ |
| | Software Start/Stop | ✓ |
| | Peripherals Watchlist | ✓ |

Note: DeviceOn/iService software must be downloaded from the Advantech website at <https://www.advantech.com/search/?q=DeviceOn%2FiService&st=support&sst=Utility>

Dimensions

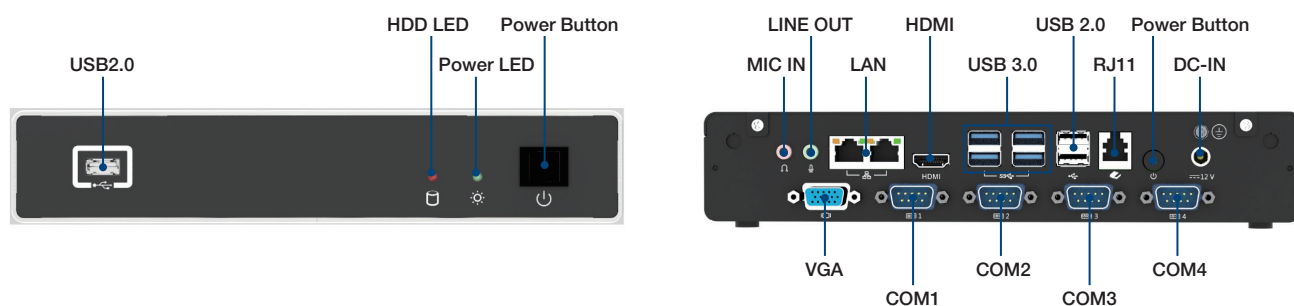
UBX-310F

Unit: mm



Fully- Integrated I/O

UBX-310F



Ordering Information

| PN | Description |
|----------------|---|
| UBX-310F-I3B00 | Intel Skylake Core i3 6100U Fanless Mini Box PC w/o RAM and Storage |
| UBX-310F-I5B00 | Intel Skylake Core i5 6300U, Fanless Mini PC w/o RAM and Storage |

Accessory

| Accessory | Part Number | Description |
|-------------|--------------------|--|
| Memory | AQD-SD4U8GN32-SE | 8GB DDR4 SODIMM-3200 1GbX8 SAM |
| | AQD-SD4U16GN32-SE | 16GB DDR4 SODIMM-3200 1GbX8 SAM |
| | AQD-SD4U32GN32-SB | 32GB DDR4 SODIMM-3200 2GbX8 SAM |
| Wifi Module | EWM-W157H01E | 802.11 a/b/g/n/ac, Realtek RTL8821AE, WiFi 1T1R, BT4.0, Half-size Mini PCIe Card |
| | 1750005885*2 | WiFi Coaxial Cable, 230 mm |
| | 1750002842*2 | WiFi 2.4 GHz and 5 GHz dipole Antenna |
| | 1930003278*1 | Screw M2*3L F/S D=3.5 H=0.8 + ST B Ni NK |
| | 9656EWMG00E | Half-size to Full-size Mini PCIe Bracket Pack |
| | 1750008717-01*2 | Dipole Ant. D.B 2.4/5G WIFI 3dBi SMA/M-R BLK(outer antenna) |
| Power Cord | 96CB-POWER-B-1.8MA | Power Cord(China), 3P 1.8M, BK(CCC) |
| | 17AP164900518011 | Power Cord CEE 7/16+C13 10A/16A 250V L1.8M(CE) |
| | 1700013977 | Power Cord 10A 250V 3P 180/90 CCC 200cm(CCC) |
| | 1702002600 | Power Cord 3P UL/CSA 10A 125V 1.83M 180C (USA) |
| | 1702002605 | Power Cord 2P FRANCE 10A 250V 1.83M 180C (EU) |
| | 1700001714 | Power Cord BSMI 3P 7A 125V 18AWG 130C M(F SMI) |
| | 1700000237 | Power Cord 3P PSE 12A 125V 1.83M 180C (Japan) |
| | 1700018704 | Power Cord BSI 3P 10A 250V 1.83M 180C (UK) |
| Mount Kit | HIP-33B-MOUNT1E | VESA MOUNT for UBX-310 |

Notes : Can support Ubuntu 18.04 or higher by request

Mounting Kit

| Mounting | Part Number | Description |
|------------|------------------|--|
| Wall Mount | 1960073138N101*2 | VESA SUPPORT FOR UBX-310D(BLACK 7C) |
| | 1930030500*4 | S/S D=5.0 H=1 120°(2+) M3*5L ST Ni |
| VESA Mount | 1950020055N001*1 | VESA BRACKET ASSY FOR UBX-310D(BLACK 7C) |
| | 1960073138N101*2 | VESA SUPPORT FOR UBX-310D(BLACK 7C) |
| | 1930030500*8 | S/S D=5.0 H=1 120°(2+) M3*5L ST Ni |

DeviceOn/iService

Unified Remote Device Management Software



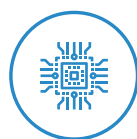
Features

- Supports Advantech devices equipped with Windows, Android, and Linux OS
- Flexible device, location, user, and permissions management
- Enables remote monitoring and control of hardware, software, and peripherals
- Supports over-the-air (OTA) firmware and software updates
- Ensures quick, easy, and secure device onboarding
- RESTful APIs for third-party system integration

Introduction

Advantech's DeviceOn/iService is a next-generation unified device management solution based on the WISE-DeviceOn platform. Designed to enable centralized monitoring and remote management, DeviceOn/iService supports Advantech devices equipped with Windows, Linux, or Android operating systems. The software also supports the management of applications and integrated peripherals, such as a barcode scanner, card reader, camera, and printer. Users can remotely access and control connected devices, take screenshots, rollout OTA upgrades, and use remote desktop capabilities for troubleshooting from any location at any time. Moreover, DeviceOn/iService supports batch operations to facilitate the management of multiple devices simultaneously for easy and convenient device configuration and deployment.

Total Management



Devices & Hardware

- Windows, Linux, Android
- Hardware, storage, battery



Software & Peripherals

- Software monitoring & access
- Screens, USB devices, printers



Open for Expansion

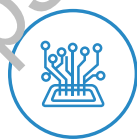
- Peripheral integration
- Open APIs for integration

Remote Access



Real-Time Monitoring

- Connection/hardware status
- Software/peripheral status
- Failure notifications



Remote Controls

- Power controls
- Audio, backlight controls
- Software controls



Troubleshooting

- Screenshots
- Remote desktop support

Operational Efficiency



OTA updates

- System/software updates
- File repository management
- App store



Batch Controls

- 1-to-many batch reboot, etc.
- Time-saving tasks



Setup Booster

- Software/peripheral watchlist
- Roles, rule templates

Note: Some functions may vary according to the product

System Architecture

