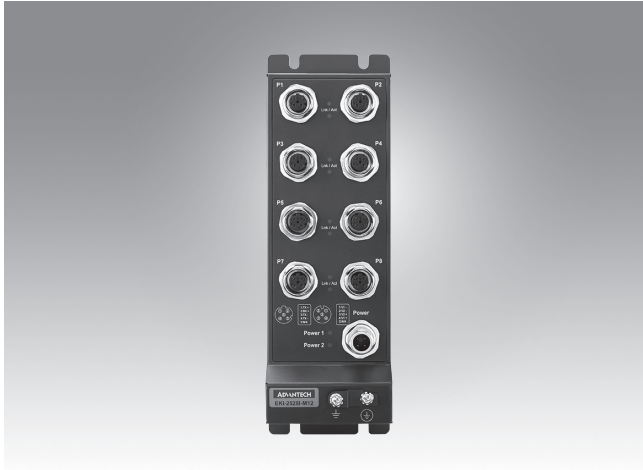


# EKI-2528I-M12

## 8 port M12 Unmanaged Industrial Ethernet Switch, IP67



### Features

- M12 connector with IP67 rugged housing
- Provides 8 fast Ethernet ports with Auto MDI/MDI-X
- Supports 10/100 Mbps auto-negotiation
- Complies with EN50155
- Complies with IEC 61131-2 specifications
- Supports redundant 12 ~ 48 V<sub>DC</sub> power input
- Supports wide operating temperature range from -40 to 75 °C

### Introduction

The EKI-2528I-M12 unmanaged switches are designed for application in harsh environments. First of all, the switches provide 8 Fast Ethernet ports with M12 D-coded connectors which can connect the cables tightly against vibration and shock. Second, the switches support 10/100 Mbps, auto MDI/MDI X. Third, when supporting wide power input ranging from 12 to 48V with Polarity Reverse Protection and Overload Current Resettable Fuse, the EKI-2528I-M12 switches are robust and economical solutions for your network. Finally, as the switches are IP67-rated and is compliant with IEC 61131-2:2017, they are suitable for PLC application and their associated peripherals.

### Specifications

#### Communications

- **Standard IEEE** 802.3, 802.3u, 802.3x
- **LAN** 10/100Base-T (X)
- **Transmission Speed** Up to 100 Mbps

#### Interface

- **Connectors** 8 x M12 with D-coded  
4-pin M12 A-code for Power Connection
- **LED Indicators** Power 1, Power 2  
10/100 (X): Link/Activity

#### Power

- **Power Consumption** 2.5 Watts
- **Power Input** 12 ~ 48 V<sub>DC</sub>, redundant dual inputs
- **Operating Voltage** 9.6 ~57.6 V<sub>DC</sub>

#### Mechanism

- **Dimensions (W x H x D)** 62 x 194 x 25 mm (2.44" x 7.63" x 1.00")
- **Enclosure** IP67, Metal shell with solid mounting kits
- **Mounting** DIN-rail, Wall

#### Protection

- **Reverse Polarity** Present
- **Overload current** Present

#### Environment

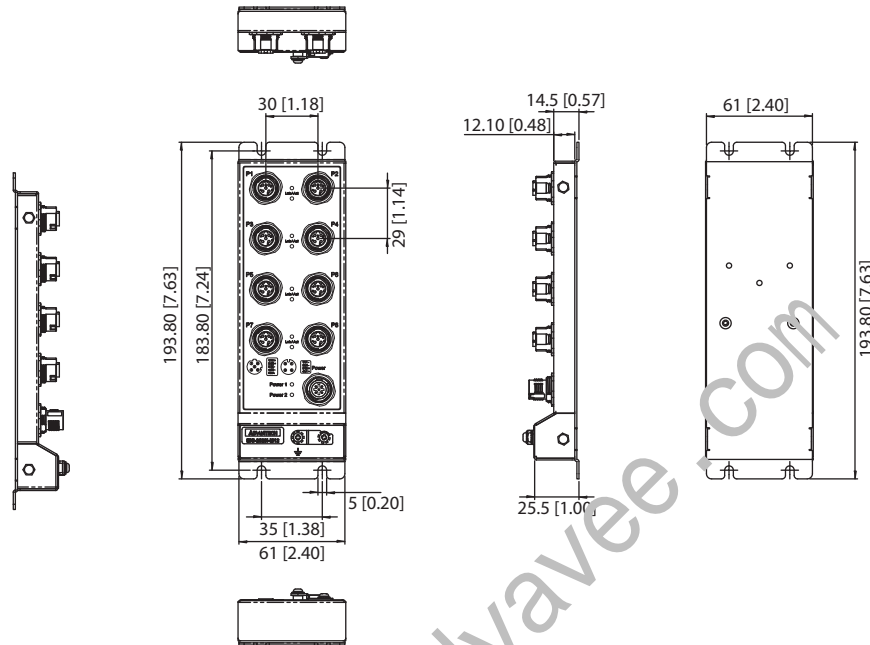
- **Operating Temperature** -40 ~ 75 °C (-40 ~ 167 °F)
- **Storage Temperature** -40 ~ 85 °C (-40 ~ 185 °F)
- **Operating Humidity** 5 ~ 95% (non-condensing)
- **Storage Humidity** 5 ~ 95% (non-condensing)

#### Certification

- **Safety** UL 61010
- **EMI** EN 61131-2  
CE, CE-LVD, FCC Class A , RCM
- **EMS** EN 61000-4-2  
EN 61000-4-3  
EN 61000-4-4  
EN 61000-4-5  
EN 61000-4-6  
EN 61000-4-8
- **Shock** IEC 60068-2-27, EN 61373
- **Freefall** IEC 60068-2-32
- **Vibration** IEC 60068-2-6: 5g @ 10-150Hz,  
EN 61373
- **Railway** Complies with EN50155

## Dimensions

Unit: mm



Panel Cut-out Dimensions: 62 x 124 x 25 mm (2.44" x 7.63" x 1.00")

## Ordering Information

- EKI-2528I-M12-AE 8 port M12 Ethernet Switch w/ IP67 and Wide Temp