

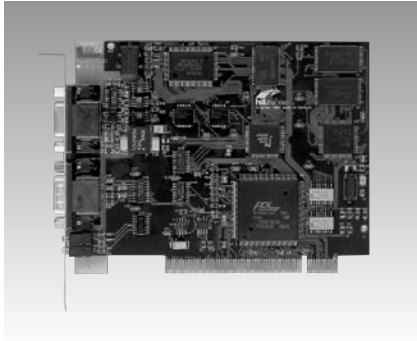
# CIF50-PB CIF104-PB CIF104-DPS CIF104P-PB

PROFIBUS™ DP/FMS Master PCI Communication Card

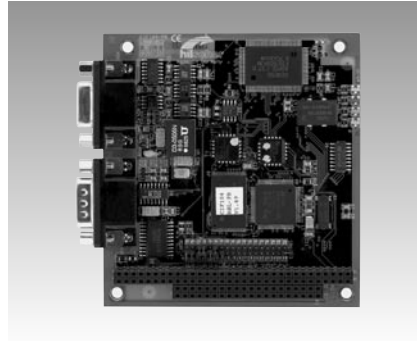
PROFIBUS™ DP/FMS Master PC/104 Module

PROFIBUS™ DP Slave PC/104 Module

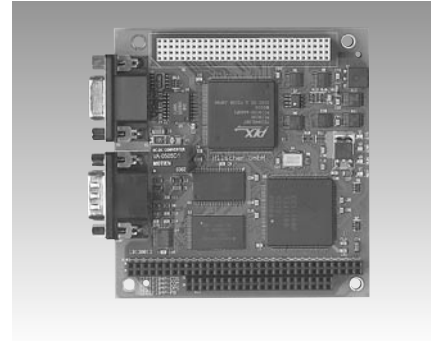
PROFIBUS™ DP/FMS Master PC/104-Plus Module



CIF50-PB



CIF104-PB, AD-CIF104-DPS



CIF104P-PB



## Specifications

### Bus Interface

- **Interface** PCI
- **Dual-port Memory** 8 KB
- **Interrupt** 3-7, 9-12,14, 15 via Plug & Play

### PROFIBUS Interface

- **Interface** EN 50170
- **Transmission Rate** 9.6 kBaud to 12 MBaud
- **Connector** ASPC2
- **Interface** RS485, optically isolated
- **Connector** DSub-female connector 9-pin

### Diagnostic Interface

- **Interface** RS232C, non-isolated
- **Connector** DSub-male connector 9-pin

### General

- **Display** RDY, RUN, STA, ERR
- **Operating Voltage** 5 V ±5 % / 650 mA
- **Operating Temperature** 0 ~ 55° C (32 ~ 131° F)
- **Dimensions (L x W x H)** 134 x 107 x 20 mm (5.3" x 4.2" x 0.8")
- **Weight** 130 g
- **Software**  
C functions library: DRV-TKIT  
COM interface: DRV-COM  
Device driver Windows: DRV-WIN  
Device driver Linux: DRV-LNX  
Documentation on CD: CD-SYS  
Basic version System Configurator

## Ordering Information

- **CIF50-PB** Communication Interface PCI PROFIBUS-DP/FMS-Master Card

## Specifications

- **Card Format** PC/104

### Bus Interface

- **Interface** ISA
- **Dual-port Memory** 8 KB
- **Interrupt** 3-7,9-12,14,15

### PROFIBUS interface

- **Interface** EN 50170
- **Transmission Rate** 9.6 kBaud to 12 MBaud
- **Controller** ASPC2
- **Interface** RS485, optically isolated
- **Connector** DSub-female 9-pin

### Diagnostic Interface

- **Interface** RS232C, non-isolated
- **Connector** DSub-male 9-pin

### General

- **Display** RDY, RUN, STA, ERR
- **Operating Voltage** +5 V ±5% / 650 mA
- **Operating Temperature** 0 ~ 55° C (32 ~ 131° F)
- **Dimensions (L x W x H)** 90 x 96 x 25 mm (3.5" x 3.7" x 1")
- **Weight** 120 g
- **Software**  
C functions library: DRV-TKIT  
COM interface: DRV-COM  
Device driver Windows: DRV-WIN  
Device driver Linux: DRV-LNX  
Documentation on CD: CD-SYS  
Basic version System Configurator

## Ordering Information

- **CIF104-PB** PROFIBUS-DP/FMS-Master PC/104 Module with left DSub 9-pin connector
- **CIF104-DPS** PROFIBUS-DP-Slave PC/104 Module with left DSub 9-pin connector

## Specifications

- **Card Format** PC/104-Plus

### Bus Interface

- **Interface** PCI
- **Dual-port Memory** 8 KB
- **Interrupt** Plug & Play

### PROFIBUS interface

- **Interface** EN 50170
- **Transmission Rate** 9.6 kBaud to 12 MBaud
- **Controller** EC1
- **Interface** RS485, optically isolated
- **Connector** DSub-female 9-pin

### Diagnostic Interface

- **Interface** RS232C, non-isolated
- **Connector** DSub-male 9-pin

### General

- **Display** RDY, RUN, STA, ERR
- **Operating Voltage** +5 V ±5% / 50 mA, +3.3 V ±5% < 400 mA
- **Operating Temperature** 0 ~ 55° C (32 ~ 131° F)
- **Dimensions (L x W x H)** 90 x 96 x 25 mm (3.5" x 3.7" x 1")
- **Weight** 120 g
- **Software**  
C functions library: DRV-TKIT  
COM interface: DRV-COM  
Device driver Windows: DRV-WIN  
Device driver Linux: DRV-LNX  
Documentation on CD: CD-SYS  
Basic version System Configurator

## Ordering Information

- **CIF104P-PB** PROFIBUS-DP/FMS-Master PC/104-Plus Module with left DSub 9-pin connector