

# WebAccess/VPN

Advanced Secure Networking Platform for Cellular Routers and Gateways

- ✓ Secure Private Networks in Internet
- ✓ Encrypted & Reliable Communication
- ✓ Centrally defined VPN topology
- ✓ Managed LAN, 1:1 NAT modes
- ✓ Firewall & Access Control
- ✓ User-friendly Management
- ✓ Easy Deployment
- ✓ Extensive Platform Compatibility



**ADVANTECH**

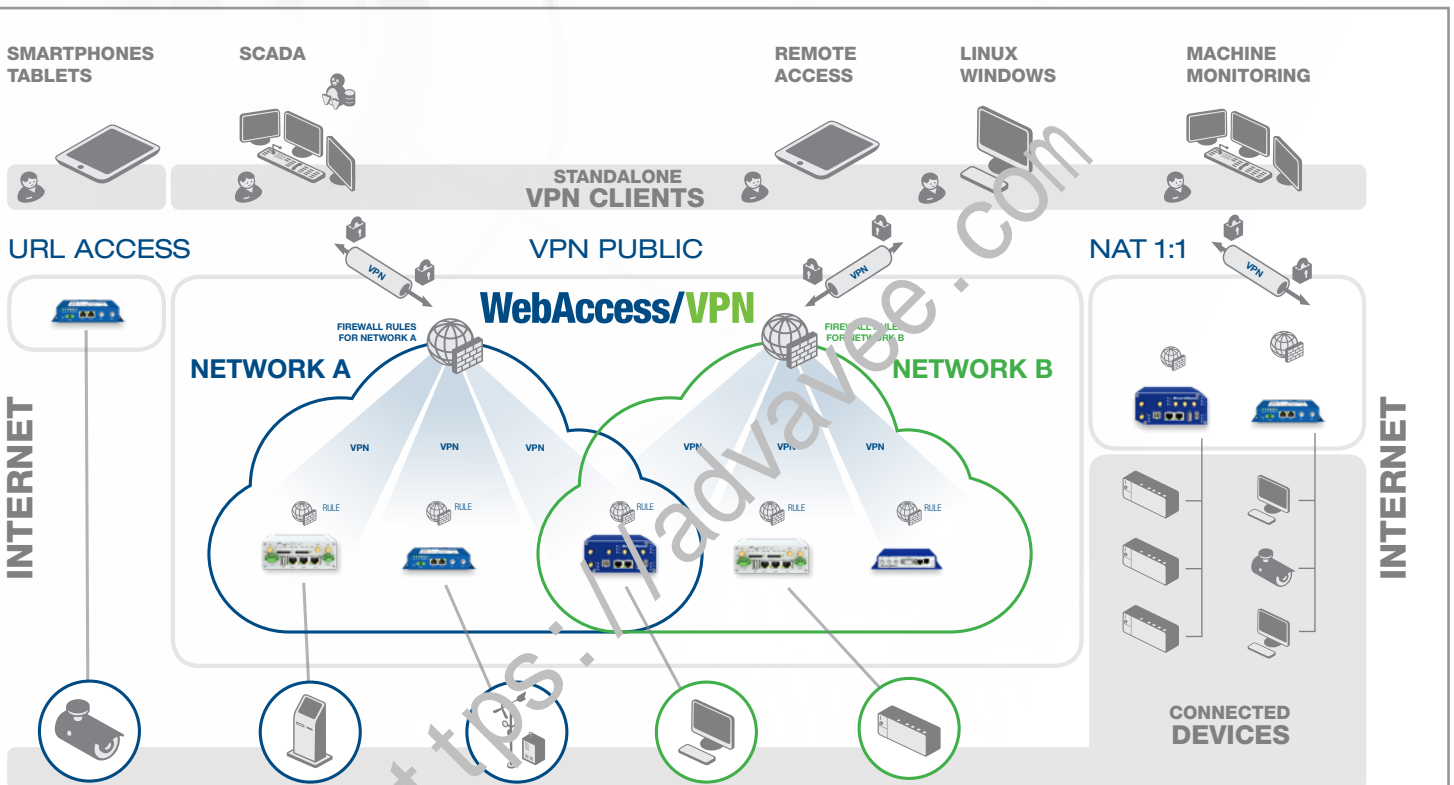
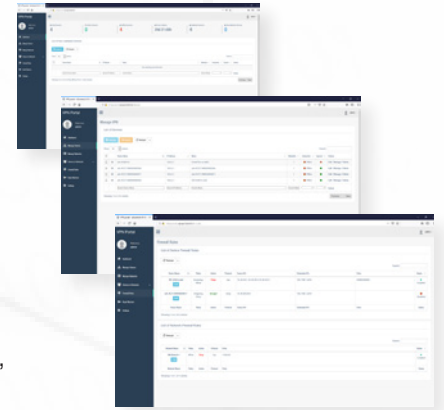
*Enabling an Intelligent Planet*

[www.advantech.com](http://www.advantech.com)

# WebAccess/VPN

**WebAccess/VPN** is an advanced VPN management solution for safe interconnection of Advantech routers and LAN networks in public Internet. Connection among devices and networks can be regional or global and can combine different technology platforms and various wireless, LTE, fixed and satellite connectivities.

**WebAccess/VPN** provides an easy and secure connectivity platform for applications such as branch connection, remote access, machine monitoring in industry sectors like Utilities & Energy, Automation, Predictive maintenance, Industrial IoT for any end device types such as Computers, PLCs, RTUs, Cameras, Terminals...



## The WebAccess/VPN - EASY and SECURE VPN Solution Facts & Benefits

- **WebAccess/VPN** makes it easy to set, scale and supervise secure networks of Advantech routers and other devices in Internet environment.
- **WebAccess/VPN** solves network security issues and provides secure connections for individual LANs.
- **All communication** going through the **VPN Portal** is **encrypted** and **hidden** from potential intruders.
- The architecture of **WebAccess/VPN** withstands common attack vectors. The network traffic runs through OpenVPN tunnels.
- **Independent** of mobile operators. No need for public or static IPs. No need for private APN or DDNS.
- Each device connected to the router within VPN network has a **fixed private IP** address for transparent communication.
- **User-friendly Management** helps admins and users to configure and control routers in their defined LANs
- **WebAccess/VPN** is compatible with SCADA systems, Linux, Windows, Smart phones, Tablets etc.
- **WebAccess/VPN** is compatible with existing network topologies such as Cellular, Fibre, Satellite, ADSL.

## PRODUCT FEATURES

### The secure interconnection networking platform

Communication among devices and third-party devices is encrypted. Only the devices with valid certificates can connect to each other and safe HTTPS protocol is used for VPN portal UI connection. WebAccess/VPN provides complete supervision over the network and builds a highly resistant „private environment“ within the Internet.

The key security factors:

- All connecting devices must be validated
- All-time encryption over all phases
- VPN tunnel established using strong cryptography

### Sub-network concept for inter-router access control

The networks concept within the **WebAccess/VPN** allows the customer to create “fine grade groups” of router visibility/reachability. The routers are grouped into Networks with device possibility to be visible in more networks crossovers. This feature allows the customer to create separate groups of routers that are visible to each other and also assign a router to be a member of more networks concurrently.

### Independent management for each router interface

**WebAccess/VPN** provides 4 user selected modes – each mode can be operated on every router interface (Ethernet or WIFI) independently.

- **VPN Public** - connected devices to the router are visible for all routers in the same network
- **1:1 NAT** - LAN IP addresses are translated to the virtual address space
- **Local Only** - LAN settings is managed but devices on this LAN cannot access the VPN
- **Ignored** - LAN is not managed at all

### Standalone VPN Client access for any other device

One of the top features - Standalone VPN Client. From a practical point of view we talk about computers, PC's or other devices accessing routers and devices connected to routers through the encrypted OpenVPN channel (VPN Public, 1:1 NAT modes).

### Access control - Fine grade firewall rules

**WebAccess/VPN** portal supports custom selected filtering rules for each connected device or whole network independently. Based on the communication direction **WebAccess/VPN** operates with two categories - Incoming and Outgoing communication. Each direction has its own default policy settings that can be „Allowed“ or „Denied“ by user.

### Zero-touch centralized configuration

All devices are directly managed using a secure control channel from **WebAccess/VPN**. The configurations of routers in the field (LAN IP settings, assign to network membership, access control) are distributed automatically in real time.

### Central point for direct access to router GUI

**WebAccess/VPN** is the central point of direct online access to the router web interface via internal proxy server. It's a handy tool for instant remote device maintenance and diagnostics.

## SW OPTIONS & ORDERING CODES

**WebAccess/VPN** is distributed as On-Premise version or as a prepared image for Amazon cloud (AWS). After downloading **WebAccess/VPN** installation package and On-Premise installation. This enables the server connection to 5 routers and 2 standalone VPN clients. Such an installation is **FREE OF CHARGE**, time unlimited and supports full set of **WebAccess/VPN** features. To unlock the possibility to add a higher number of routers into **WebAccess/VPN** follow the ordering codes below to obtain the appropriate licence file.

#### ORDERING CODES

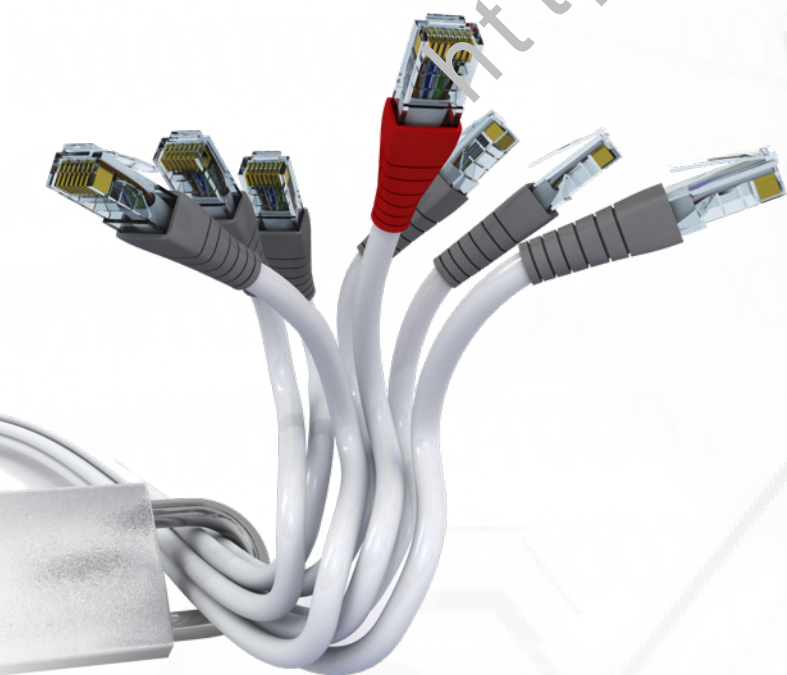
VPN-SW-50	WebAccess/VPN, SW for 50 routers and 10 VPN clients
VPN-SW-500	WebAccess/VPN, SW for 500 routers and 50 VPN clients
VPN-SW-5000	WebAccess/VPN, SW for 5 000 routers and 100 VPN clients

### Free software updates for 24 months

For every **WebAccess/VPN** licence software updates are available for no additional cost in total duration of 24 months from the date of software activation. During this extend long period of time the administrator can update **WebAccess/VPN** to the newest version released.

## HW REQUIREMENTS

Please check hardware requirements in the up to date version of **WebAccess/VPN** User guide.



## Regional Service & Customization Centers

**China** | Kunshan  
86-512-5777-5666

**Taiwan** | Taipei  
886-2-2792-7818

**Netherlands** | Eindhoven  
31-40-267-7000

**Poland** | Warsaw  
00800-2426-8080

**USA** | Milpitas, CA  
1-408-519-3898

## Worldwide Offices

### Greater China

**China**  
Toll Free 800-810-0345  
Beijing 86-10-6298-4346  
Shanghai 86-21-3632-1616  
Shenzhen 86-755-8212-4222  
Chengdu 86-28-8545-0198  
Hong Kong 852-2720-5118

**Taiwan**  
Toll Free 0800-777-111  
Taipei & IoT Campus 886-2-2792-7818  
Taichung 886-4-2372-5058  
Kaohsiung 886-7-392-3600

### Middle East and Africa

Israel 072-2410527

### Asia

**Japan**  
Toll Free 0800-500-1055  
Tokyo 81-3-6802-1021  
Osaka 81-6-6267-1887  
Nagoya 81-0800-500-1055

**Korea**  
Toll Free 080-363-9494  
Seoul 82-2-3663-9494

**Singapore**  
Singapore 65-6442-1000

**Malaysia**  
Kuala Lumpur 60-3-7725-4188  
Penang 60-4-537-9188

**Thailand**  
Bangkok 66-02-2488306-9

**Vietnam**  
Hanoi 84-24-3399-1155

**Indonesia**  
Jakarta 62-21-751-1939

**Australia**  
Toll Free 1300-308-531  
Melbourne 61-3-9797-0100

**India**  
Bangalore 91-80-2545-0206  
Pune 91-94-2260-2349

### Europe

**Netherlands**  
Eindhoven 31-40-267-7000  
Breda 31-76-523-3100

**Germany**  
Toll Free 00800-2426-8080/81  
Munich 49-89-12599-0  
Düsseldorf 49-2103-97-855-0

**France**  
Paris 33-1-4119-4666

**Italy**  
Milan 39-02-9544-961

**UK**  
Newcastle 44-0-191-262-4844  
London 44-0-870-493-1433

**Spain**  
Madrid 34-91-238-86-6

**Sweden**  
Stockholm 46-722-293423

**Poland**  
Warsaw 48-22-31-51-100

**Russia**  
Moscow 8-800-555-01-50  
St. Petersburg 8-800-555-81-20

**Czech Republic**  
Ústí nad Orlicí 420-465-52-44-21

**Ireland**  
Galway 353-91-792444

### Americas

**North America**  
Toll Free 1-888-576-9668  
Cincinnati 1-513-742-8895  
Milpitas 1-408-519-3898  
Irvine 1-949-420-2500  
Ottawa 1-815-434-8731

**Brazil**  
Toll Free 0800-770-5355  
São Paulo 55-11-5592-5367

**Mexico**  
Toll Free 1-800-467-2415  
Mexico City 52-55-6275-2727

# WebAccess/VPN

COMPATIBLE WITH V2 FAMILY (LR77 V2, UR51 V2) AND V3 FAMILY (ICR-3XXX, SmartStart, SmartFlex, SmartMotion) CELLULAR ROUTERS & GATEWAYS.



V2  
LIBRATUM



V2  
UR51 V2, LR77 V2



V3  
SmartFlex



V3  
SmartMotion



V3  
ICR-3200



V3  
SmartStart

# ADVANTECH

Enabling an Intelligent Planet

[www.advantech.com](http://www.advantech.com)

Please verify specifications before quoting. This guide is intended for reference purposes only.

All product specifications are subject to change without notice.

No part of this publication may be reproduced in any form or by any means, electronic, photocopying, recording or otherwise, without prior written permission of the publisher.

All brand and product names are trademarks or registered trademarks of their respective companies.

© Advantech Co., Ltd. 2019