

SKY-TESL-L40S-48P

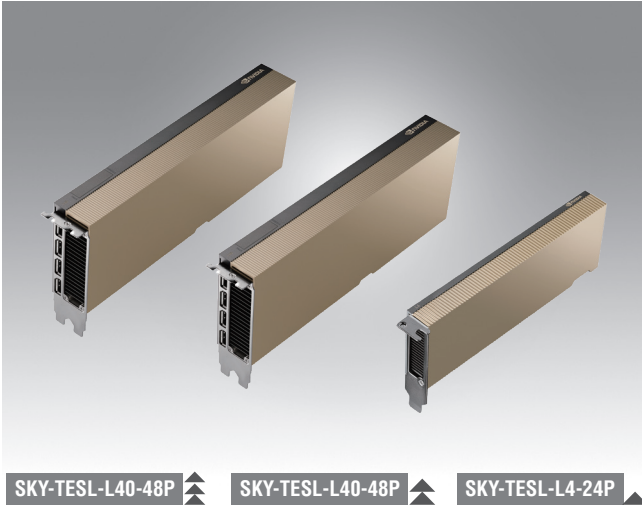
SKY-TESL-L40-48P

SKY-TESL-L4-24P

NVIDIA® Tesla® L40S

NVIDIA® Tesla® L40

NVIDIA® Tesla® L4



SKY-TESL-L40-48P

SKY-TESL-L40-48P

SKY-TESL-L4-24P

Features

- NVIDIA Ada-Lovelace GPU architecture
- Universal Compute & Graphics GPU
- Third-Generation RT Cores
- Fourth-Generation Tensor Cores
- NVIDIA Deep Learning Super Sampling 3 (DLSS3) Support
- AV1 Encode & Decode Support
- NVIDIA vGPU Support
- Graphics bus: PCI-E 4.0 x16
- Thermal solution: Passive

Introduction

NVIDIA® Tesla® L40S (SKY-TESL-L40S-48P), L40 (SKY-TESL-L40-48P) and L4 (SKY-TESL-L4-24P) PCIe cards are universal compute & graphics GPU built on the NVIDIA Ada-Lovelace architecture with PCI Express Gen4 interface in a passive heatsink cooling design suitable for data center. Combining NVIDIA Gen4 tensor cores and Gen3 RT cores can provide a high-performance computing solution. With next-generation improvements in NVIDIA virtual GPU (vGPU) software and more GPU memory than the previous generation, NVIDIA L series datacenter GPU increases workstation performance for mid-to-high-end design workflows running on NVIDIA RTX™ Virtual Workstation (vWS) and accelerates productivity applications running on NVIDIA Virtual PC (vPC).

With cutting-edge features and technology, the NVIDIA L series data center GPU provides the universal accelerator for video, AI, virtualized desktop, and graphics applications in the enterprise, in the cloud, and at the edge.

Specifications

| Product Name | Tesla L40S | Tesla L40 | Tesla L4 |
|------------------------------|---|---|--|
| Part Number | SKY-TESL-L40S-48P | SKY-TESL-L40-48P | SKY-TESL-L4-24P |
| GPU Architecture | Ada-Lovelace | Ada-Lovelace | Ada-Lovelace |
| GPU Memory | 48GB GDDR6 with ECC | 48GB GDDR6 with ECC | 24GB GDDR6 with ECC |
| Memory Bandwidth | 864GB/s | 864GB/s | 300GB/s |
| NVIDIA CUDA Cores | 18176 | 18176 | 7680 |
| Tensor Cores | 568 | 568 | 240 |
| RT Cores | 142 | 142 | 60 |
| Single-Precision Performance | 91.6 TFLOPS | 88 TFLOPS | 30.3 TFLOPS |
| Fast FP64 | No | No | No |
| System Interface | PCI Express 4.0 x16 | PCI Express 4.0 x16 | PCI Express 4.0 x16 |
| Max Power Consumption | 350W | 300W | 72W |
| Power Connector | 16-Pin PCIe | 16-Pin PCIe | - |
| Thermal Solution | Passive | Passive | Passive |
| Multi-Instance GPU | N/A | N/A | N/A |
| Form Factor | 4.4 inches(H) x 10.5 inches(L) dual slot, full height | 4.4 inches(H) x 10.5 inches(L) dual slot, full height | 2.7 inches(H) x 6.6 inches(L) single slot, low-profile |
| NVLink Support | N/A | N/A | N/A |
| Media Acceleration | 3 NVENC (+AV1 enc), 3 NVDEC (+AV1 dec) | 3 NVENC (+AV1 enc), 3 NVDEC (+AV1 dec) | 2 NVENC (+AV1 enc), 4 NVDEC (+AV1 dec) |
| Display Connectors | 4 x DP 1.4 | 4 x DP 1.4 | Headless Design |