

# SKY-TESL-A40-48P

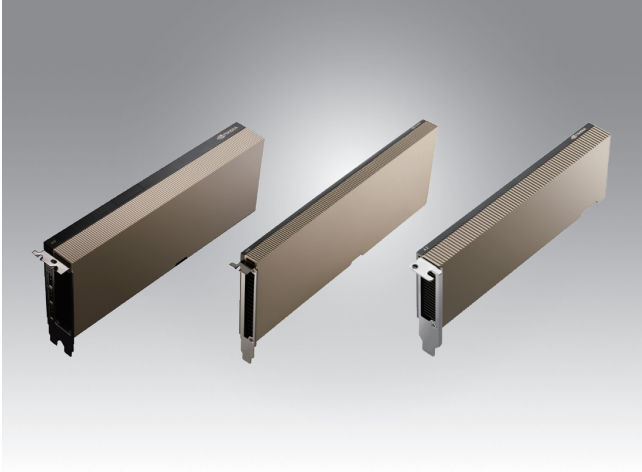
# SKY-TESL-A10-24P

# SKY-TESL-A2-16P

NVIDIA® Tesla® A40

NVIDIA® Tesla® A10

NVIDIA® Tesla® A2



## Features

- NVIDIA Ampere GPU architecture
- Compute + graphics GPU
- 10752 / 9216 / 1280 NVIDIA® CUDA® Cores
- 336 / 288 / 40 NVIDIA® Tensor Cores
- 48GB with ECC / 24GB / 16GB memory
- Up to 696 / 600 / 200GB/s memory bandwidth
- Max. power consumption: 300W / 150W / 40-60W
- Graphics bus: PCIe 4.0 x16
- Thermal solution: Passive

## Introduction

NVIDIA® Tesla® A40 (SKY-TESL-A40-48P), Tesla A10 (SKY-TESL-A10-24P), and Tesla A2 (SKY-TESL-A2-16P) PCIe cards are compute + graphics GPUs built on the NVIDIA Ampere architecture with PCI Express Gen4 interface in a passive heatsink cooling design suitable for mainstream enterprise and visual computing servers. With cutting-edge features and technologies, NVIDIA Tesla A40, A10, and A2 combine NVIDIA second-generation RT Cores, third-generation Tensor Cores, and new streaming microprocessors with GDDR6 memory, which are perfect for versatile graphics, rendering, AI, and compute performance. Built on the rich ecosystem of AI frameworks from the NVIDIA NGC™ catalog, the CUDA-X™ libraries, millions of developers and thousands of GPU-optimized applications, help enterprises solve the most critical challenges in their business.

## Specifications

Product Name	Tesla A40	Tesla A10	Tesla A2
Part Number	SKY-TESL-A40-48P	SKY-TESL-A10-24P	SKY-TESL-A2-16P
GPU Architecture	Ampere	Ampere	Ampere
GPU Memory	48 GDDR6 with ECC	24GB GDDR6	16GB GDDR6
Memory Bandwidth	696GB/s	600GB/s	200GB/s
CUDA Cores	10752	9216	1280
Tensor Cores	336	288	40
RT Cores	84	72	10
Ray Tracing	Yes	Yes	Yes
Single-Precision Performance	37.4 TFLOPS	31.2 TFLOPS	4.5 TFLOPS
System Interface	PCI Express 4.0x16	PCI Express 4.0x16	PCI Express 4.0x8
Max Power Consumption	300W	150W	40-60W
Power Connector	8-pin CPU	8-pin PCIe	-
Thermal Solution	Passive	Passive	Passive
Form Factor	4.4 inches H x 10.5 inches L dual slot, full height	4.4 inches H x 10.5 inches L single slot, full height	2.7 inches H x 6.6 inches L single slot, low-profile
NVLink Support	1 NVLINK bridge, 112.5 GB/s	-	-
Media Acceleration	1 Video Encoder, 2 Video Decoder (+AV1 decode)	1 Video Encoder, 2 Video Decoder (+AV1 decode)	1 Video Encoder, 2 Video Decoder (+AV1 decode)
Display Connectors	3 x DisplayPort 1.4a	Headless Design	Headless Design