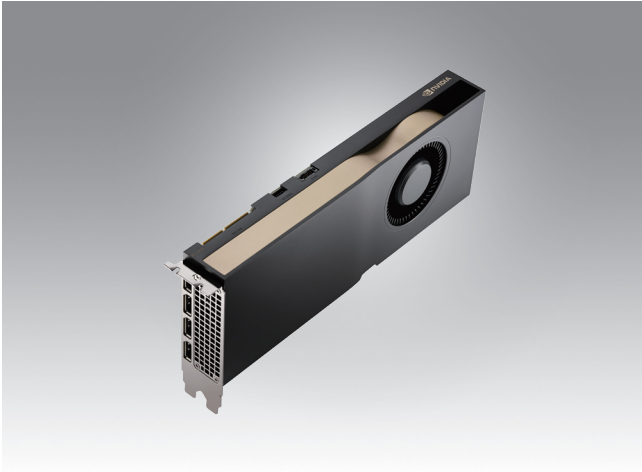


SKY-QUAD-RTXA5000B SKY-QUAD-A5000E24B

NVIDIA RTX A5000 NVIDIA RTX A5000E



Features

- Ampere GPU architecture
- NVIDIA RTX A5000E is an NVIDIA Long-life SKU. Product Life Extended Until 2029
- 8,192 NVIDIA® CUDA® Cores
- 256 NVIDIA® Tensor Cores
- 64 NVIDIA® RT Cores
- 24GB GDDR6 memory with ECC
- Up to 768GB/s memory bandwidth
- Max. power consumption: 230W
- Graphics bus: PCI-E 4.0 x16
- Thermal solution: active
- Display connectors: DP 1.4 (4)

Introduction

The SKY-QUAD-RTXA5000B (NVIDIA RTX A5000) and SKY-QUAD-A5000E24B (NVIDIA RTX A5000E) are built on the NVIDIA Ampere architecture, combining sufficient and cutting-edge second-generation RT Cores, third-generation Tensor Cores, and CUDA® cores with graphics memory and error correction code (ECC), provide the power, performance, capabilities, and reliability professionals need to supercharge rendering, AI, graphics, and compute tasks. Connect two RTX A5000s or A5000Es with NVIDIA NVLink to scale memory and performance with multi-GPU configurations, allowing professionals to work with memory-intensive tasks such as large models, ultra-high resolution rendering, and complex compute workloads. Support for NVIDIA virtual GPU software increases the versatility for enterprise deployments. Certified with a wide range of specialist applications, examined by dominant independent software vendors (ISVs) and workstation manufacturers, and supported by a global specialist team, NVIDIA RTX professional graphics cards bring you a premier visual computing solution for mission-critical business.

Specifications

Product Name	NVIDIA RTX A5000	NVIDIA RTX A5000E
Part Number	SKY-QUAD-RTXA5000B	SKY-QUAD-A5000E24B
GPU Memory	24 GB GDDR6	24 GB GDDR6
Memory Interface	384-bit	384-bit
Memory Bandwidth	768 GB/s	768 GB/s
NVIDIA CUDA Cores	8,192	8,192
Single-Precision Performance	27.8 TFLOPS	27.8 TFLOPS
System Interface	PCI Express 4.0 x16	PCI Express 4.0 x16
Max Power Consumption	230 W	230 W
Thermal Solution	Active	Active
Form Factor	4.4 inches H x 10.5 inches L, dual slot, full height	4.4 inches H x 10.5 inches L, dual slot, full height
Display Connectors	4 x DisplayPort 1.4a	4 x DisplayPort 1.4a
Max Simultaneous Displays	4 x 4096 x 2160 @ 120 Hz 4 x 5120 x 2880 @ 60 Hz 2 x 7680 x 4320 @ 60 Hz	4 x 4096 x 2160 @ 120 Hz 4 x 5120 x 2880 @ 60 Hz 2 x 7680 x 4320 @ 60 Hz
Graphics APIs	DirectX 12.07 Shader Model 5.17 OpenGL 4.68 Vulkan 1.2	DirectX 12.07 Shader Model 5.17 OpenGL 4.68 Vulkan 1.2
Compute APIs	CUDA, DirectCompute, OpenCL™	CUDA, DirectCompute, OpenCL™