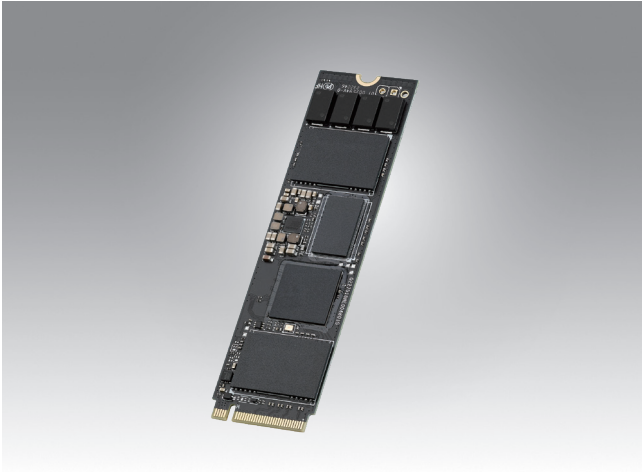


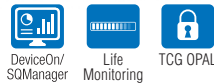
# SQF-C8M 930L-D

## PCIe Gen.4 x4 M.2 2280 SSD



### Features

- NGFF M.2 2280 (M Key)
- Compliant with NVMe 1.4
- AES-256 Support & TCG-OPAL Compliant
- Supports LDPC & RAID ECC
- Built-in Tantalum capacitor for power loss protection
- SMART and GUI management tool



### Specifications

Connect Type	NGFF M Key
Flash type	3D TLC
Capacity	480GB ~ 1.9TB
Transfer Mode	PCIe Gen.4 x4
Max. Power Consumption	Read: 11.55 W, Write: 11.55 W
Sequential R/W Performance (*)	up to 5,500/ 2,000 MB/sec
Operating Temperature	Commercial grade: 0 to +70 °C Middle grade: -20 to +85 °C
Shock Resistance	1,500 G, peak / 0.5 ms
Vibration Resistance	20 G, peak / 80 ~ 2000 Hz
Dimensions (mm)	80.0 x 22.0 x 4.0

(\*) These values are for reference only; they may change according to the flash memory used.

### Ordering Information

PN	Descriptio.
SQF-C8ME4-480GDEEC	SQF PCIe/NVMe Gen.4 M.2 2280 930L-D 480G 3D TLC BiCS5 w/ super cap., DWPD 1.0, (0~70°C)
SQF-C8ME4-960GDEEC	SQF PCIe/NVMe Gen.4 M.2 2280 930L-D 960G 3D TLC BiCS5 w/ super cap., DWPD 1.0, (0~70°C)
SQF-C8ME4-1K9GDEEC	SQF PCIe/NVMe Gen.4 M.2 2280 930L-D 1920G 3D TLC BiCS5 w/ super cap., DWPD 1.0, (0~70°C)
SQF-C8ME4-480GDEEM	SQF PCIe/NVMe Gen.4 M.2 2280 930L-D 480G 3D TLC BiCS5 w/ super cap., DWPD 1.0, (-20~85°C)
SQF-C8ME4-960GDEEM	SQF PCIe/NVMe Gen.4 M.2 2280 930L-D 960G 3D TLC BiCS5 w/ super cap., DWPD 1.0, (-20~85°C)
SQF-C8ME4-1K9GDEEM	SQF PCIe/NVMe Gen.4 M.2 2280 930L-D 1920G 3D TLC BiCS5 w/ super cap., DWPD 1.0, (-20~85°C)