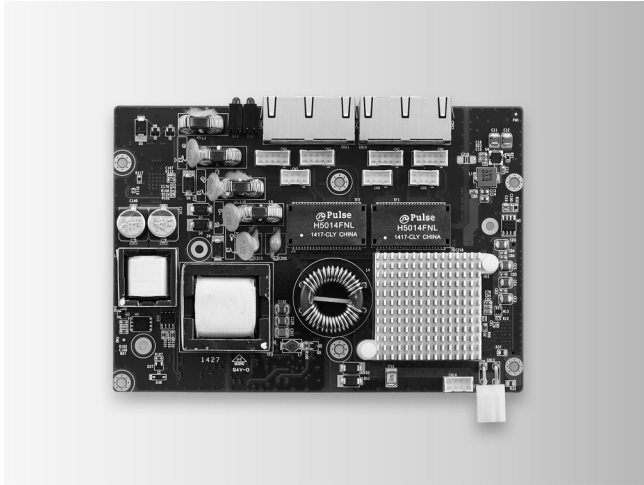


# MIOE-3674

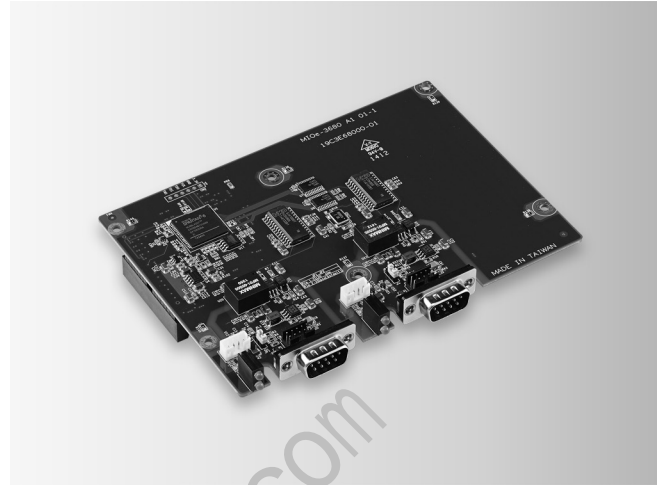
# MIOE-3680

## 4-port 10/100/1000 BaseT(X) 802.3af (PoE) Compliant Ethernet ports

## 2-Port CAN-Bus MIOe Module with Isolation Protection



MIOE-3674



MIOE-3680



### Features

- Intel® server-grade GbE Mac Controller
- Supports 12 V<sub>DC</sub> AT/ATX input power -- boost up to 15.4 watts at 48 V<sub>DC</sub> per PoE port
- Powered Device (PD) auto detection and classification
- Supports IEEE 802.3u Auto-Negotiation 2.25 KV isolation protection on LAN ports and power
- Supports Jumbo frame (9,500 byte) and link aggregation
- Supports IEEE-1588 and IEEE-802.1 AS PC CPU off-load by onboard DSP processor

### Specifications

#### General

- **Compatibility** IEEE 802.3, IEEE 802.3u, IEEE802.3ab, IEEE802.3x, IEEE802.3af
- **Speed** 10/100/1000 Mbps
- **No. of Ports** 2 or 4 Gigabit Ethernet Media Access Control (MAC) and physical layer (PHY) ports
- **Port Connector** 8-pin RJ45
- **Protection** Built-in 2.25KV isolation protection on LAN ports and power, ESD 8KV, EFT 2KV
- **Bus Interface** MIOe PCI Express

#### Power Over Ethernet Port

- 2 or 4 Gigabit Ethernet Media Access Control (MAC) and physical layer (PHY) ports.
- Full controller compliance with IEEE 802.3.af standard for maximum 15.4 watts, with power up to 48 V over existing Ethernet infrastructure, with no modifications required
- Standard IEEE 802.3 Ethernet interface provided for 1000BASE-T, 100BASE-TX, and 10BASE-T applications (802.3, 802.3u, and 802.3ab, 802.3x) 9014 bytes jumbo frame support

#### Protection

- **Isolation Protection** 2.25KV isolation on LAN and power

#### Environment

- **Operating Temperature** 0°C to 50°C (normal)  
0°C to 60°C \* (Ambient; 0 CFS airflow)

**Note!** With an external heat sink. Airflow required for operation in 60°C ambient temperature.

### Ordering Information

- **MIOe-3674** 4-port 10/100/1000 BaseT(X) 802.3af (PoE) Compliant Ethernet ports

### Features

- Operates two separate CAN networks at the same time
- High speed transmission up to 1 Mbps
- 16 MHz CAN controller frequency
- Optical isolation protection of 2,500 V<sub>DC</sub> ensures system reliability
- MAC address automatically assigned by PCI PnP
- LED indicates Transmit/Receive status on each port
- Windows DLL library and examples included
- Supports Windows CE5/CE6/XP/7 driver and utility
- Supports Linux 2.4.xx / 2.6.xx; QNX 6.3x/6.4.x/6.5.x Intel x86 hardware platform

### Specifications

#### General

- **Bus Interface** PCIe bus spec. 1.2 compliant
- **Ports** 2
- **Dimensions** 102 x 145 mm
- **Connector** Dual DB9 male connectors
- **Power Consumption** 5 V @ 400 mA (Typical)

#### Communications

- **Communication Controller** NXP SJA-1000
- **CAN Transceiver** NXP\_TJA1051T
- **Signal Support** CAN\_H, CAN\_L
- **CAN Controller Frequency** 16 MHz
- **Speed (bps)** Up to 1 Mbps programmable transfer rate

#### Protection

- **Isolation Protection** 2.25KV isolation on LAN and power

#### Environment

- **Operating Temp.** -40 ~ 85°C (-40 ~ 185°F)

### Ordering Information

- **MIOe-3680** 2-port CAN-bus MIOe /PCIe Module with Isolation Protection (CANbus transceiver board included)